

14:1



St Lucie Vista Estates

BEING THE WEST 1/2 OF GOV'T LOT 3,
SEC. 33, T.37S, R.1E,
MARTIN COUNTY, FLORIDA.

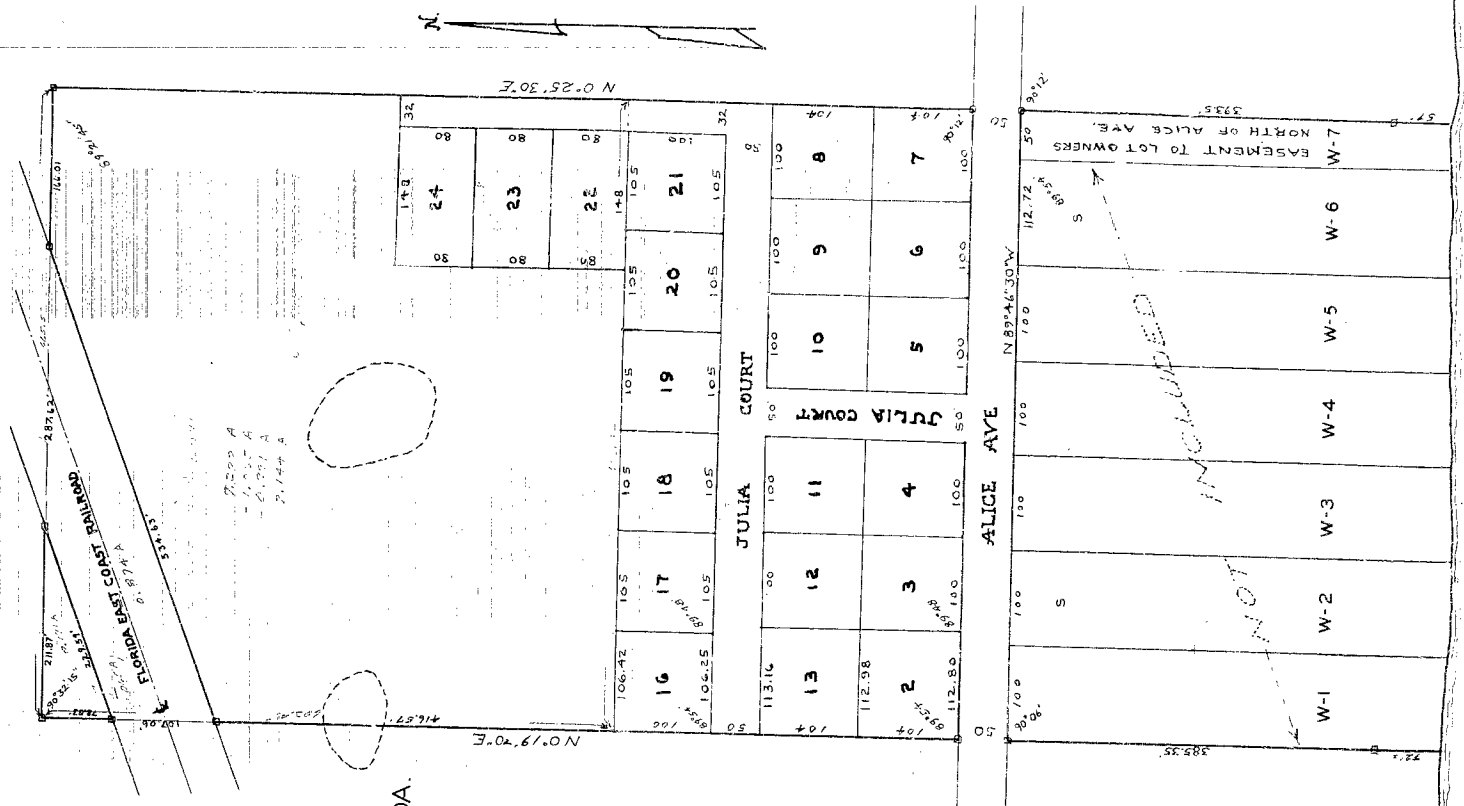
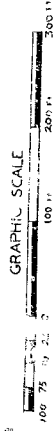
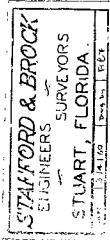
DEVELOPED BY:
THE AMERICAN VENETIAN CORP.
P.O. BOX 272
STUART
FLORIDA

I HEREBY CERTIFY THAT THE PLAT SHOWN HEREON
IS A TRUE AND CORRECT REPRESENTATION OF A SURVEY
MADE UNDER MY DIRECTION, AND THAT SAID SURVEY
IS ACCURATE TO THE BEST OF MY KNOWLEDGE AND
BELIEF.

James E. Brock
REGISTERED LAND SURVEYOR
FLORIDA CERTIFICATE NO. 6785

REVISED: MAR., 30, 1967

James E. Brock



FILE: 20-39

MAP OF
SOUTH RIVER COLONY
 MARTINE COUNTY, FLORIDA

BEING A PORTION OF LOT 1, TROPICAL FRUIT
 FARM, ACCORDING TO PLAT THEREOF FILED IN PLAT BOOK
 NO. 10, PUBLIC RECORDS OF PALM BEACH COUNTY,
 FLORIDA, SAID LANDS NOW LYING AND BEING IN MARTINE
 COUNTY, FLORIDA, AND ALSO, THAT PART OF THE SOUTH
 SIDE OF THE HIGHWAY OF THE STATE OF SECTION 17, TOWNSHIP
 SOUTH, RANGE 41 EAST, LYING EAST OF THE SOUTH FORK
 OF THE ST. LUCIE RIVER.

NOTES:

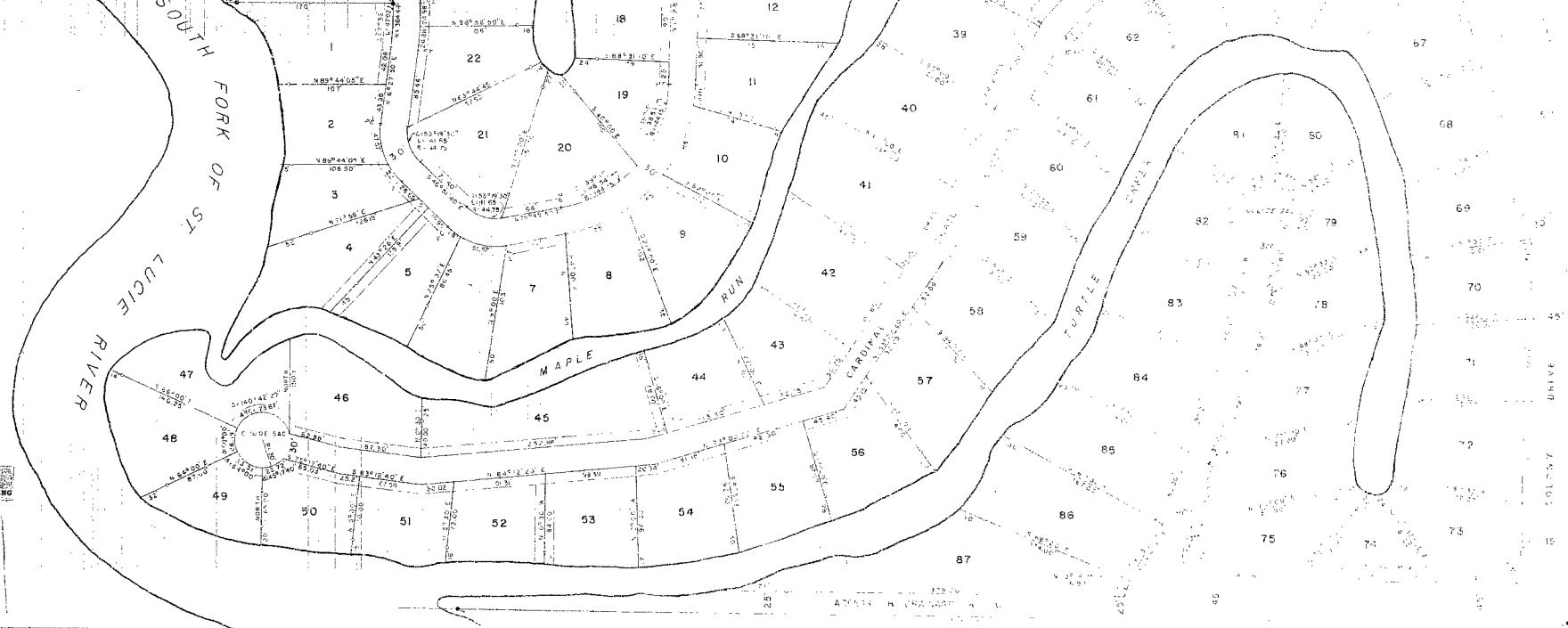
- 1. EACH SIDE LOT LINE EXTENDS FROM ROAD RIGHT-OF-WAY
 LINE TO THE EDGE OF HATCH IN GREEN, LAND & DITCHES.
- 2. 10 FOOT WIDE DRAINAGE EASEMENT ON EACH SIDE LOT
 LINE COMMON TO THE FOLLOWING LOTS: 23, 24, 25, 26,
 27, 28, 29, 30, 31, 32, 33, 34, 35, 36, 37, 38, 39,
 40, 41, 42, 43, 44, 45, 46, 47, 48, 49, 50, 51, 52, 53,
 54, 55, 56, 57, 58, 59, 60, 61, 62, 63, 64, 65, 66, 67, 68,
 69, 70, 71, 72, 73, 74, 75, 76, 77, 78, 79, 80, 81, 82, 83,
 84, 85, 86, 87, 88, 89, 90, 91, 92, 93, 94, 95, 96, 97, 98,
 99, 100.
- 3. 10 FOOT WIDE UTILITY EASEMENT ON THE ROAD FRONT
 OF EACH LOT, AS SHOWN HEREON.

CERTIFICATE OF SURVEYOR

STATE OF FLORIDA
 COUNTY OF INDIAN RIVER
 I HEREBY CERTIFY THAT THIS MAP OF SOUTH RIVER COLONY WAS MADE
 FROM AN ACTUAL SURVEY MADE BY ME AND THAT THE LOTS AND MAP
 ARE TRUE AND ACCURATE. THE LOTS AS MAPPED
 DATED THIS 15th DAY OF MARCH, 1921.

WALTER S. BROWN
 SURVEYOR
 FLORIDA CERTIFICATE NO. 1921
 PALM BEACH, FLORIDA

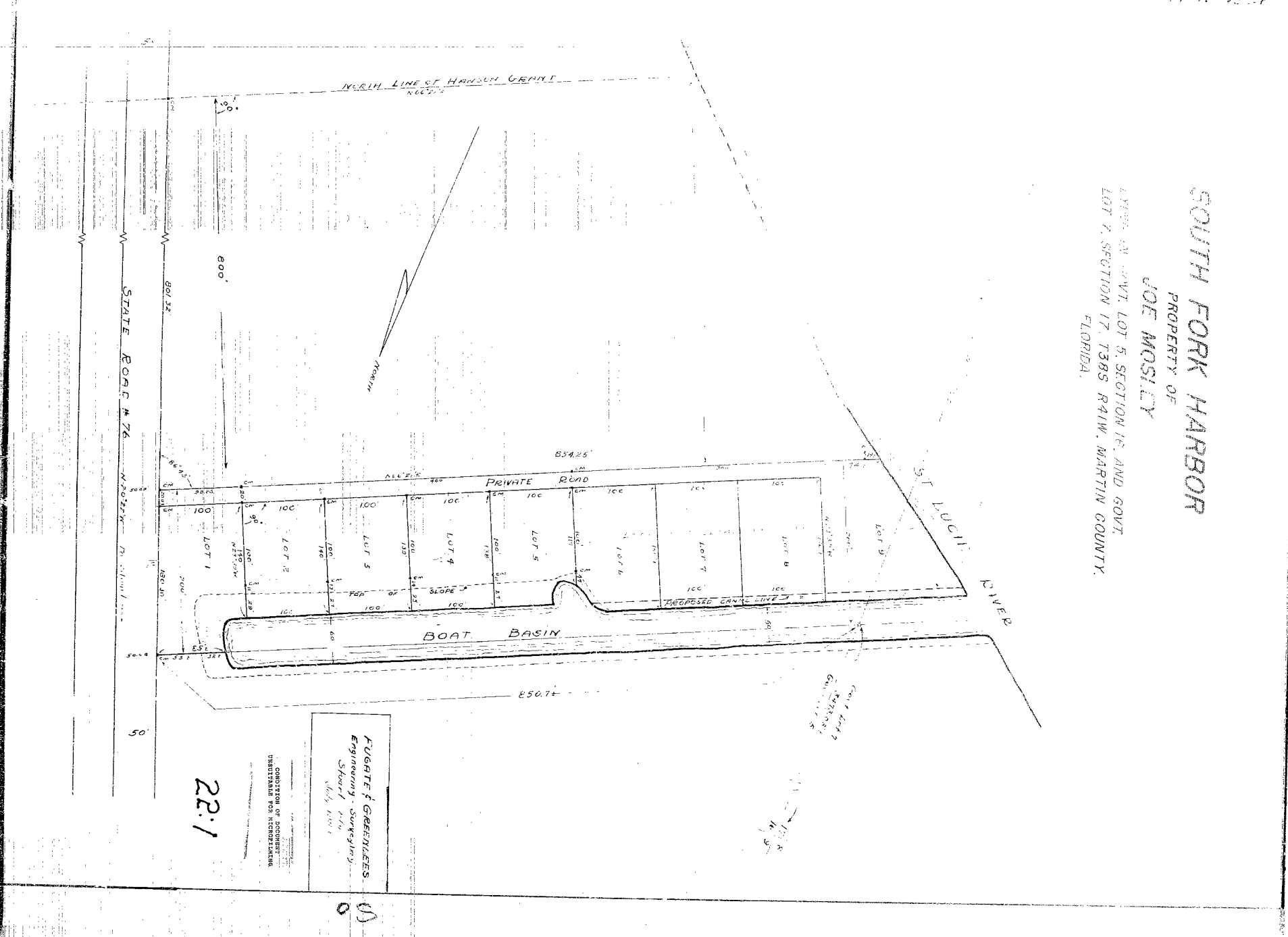
THE CORNER OF THE SITE
 OF THE HIGHWAY OF THE
 STATE OF FLORIDA
 SEC. 17, TOWNSHIP
 SOUTH, RANGE 41 EAST



22:1

South Fork Harbor

SOUTH FORK HARBOR
PROPERTY OF
JOE MOSLEY
LARGE AN EASE, LOT 5, SECTION 16, AND GOVT.
LOT 7, SECTION 17, T38S R41W, MARTIN COUNTY,
FLORIDA.



22:1

FUGATE & GARFIELD'S
Engineering - Surveying
Shard, Fla.
July 1961

DEPARTMENT OF CONSERVATION
APPROVED FOR RECORDING

347 p. 380

347 p. 381

347 p. 382

347 p. 383

317 p. 384

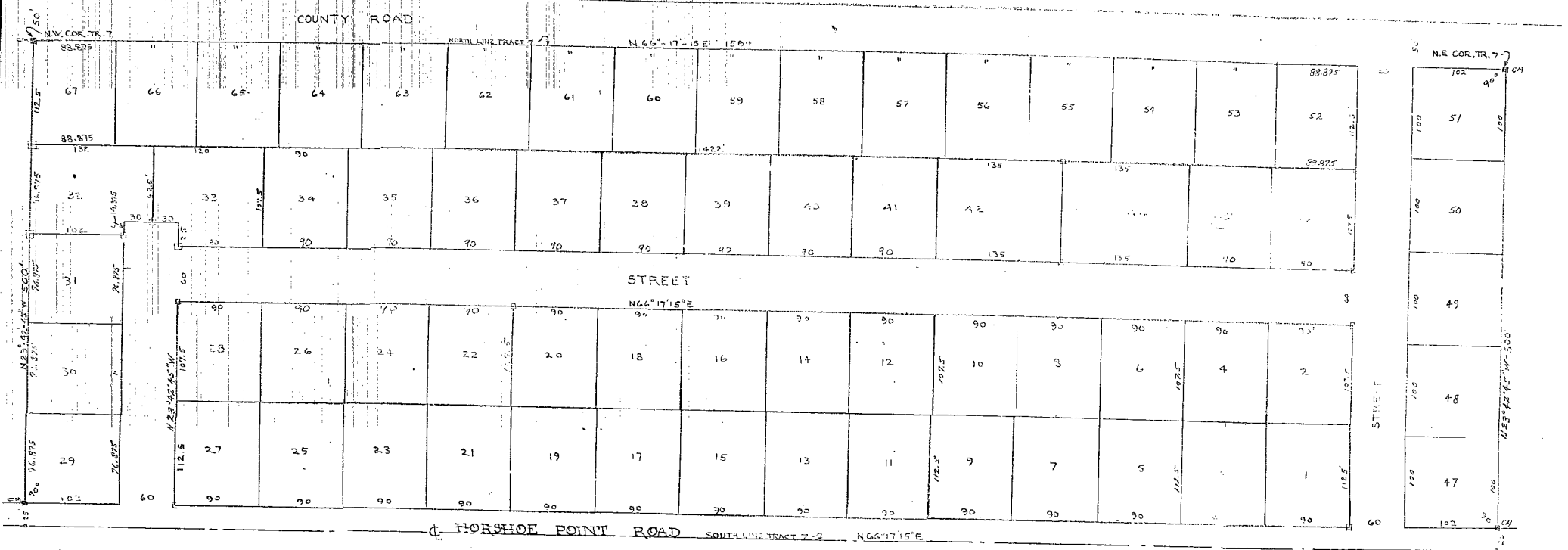
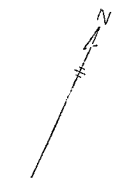
SURVEY MAP

SHOWING A DIVISION OF TRACT 7, J. O. JACKSON'S ALLOTMENT
PLAT BOOK 5, PG. 70, RECORDS OF PALM BEACH CO., NOW MARTIN COUNTY, FLORIDA.

20 MARCH 1972

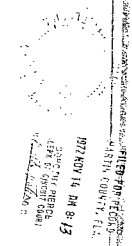
"TALL PINES"

SCALE 1" = 50'



CONDITION OF DOCUMENT
UNSATISFACTORY FOR MICROFILMING

22:1



347 p. 385

347 p. 386

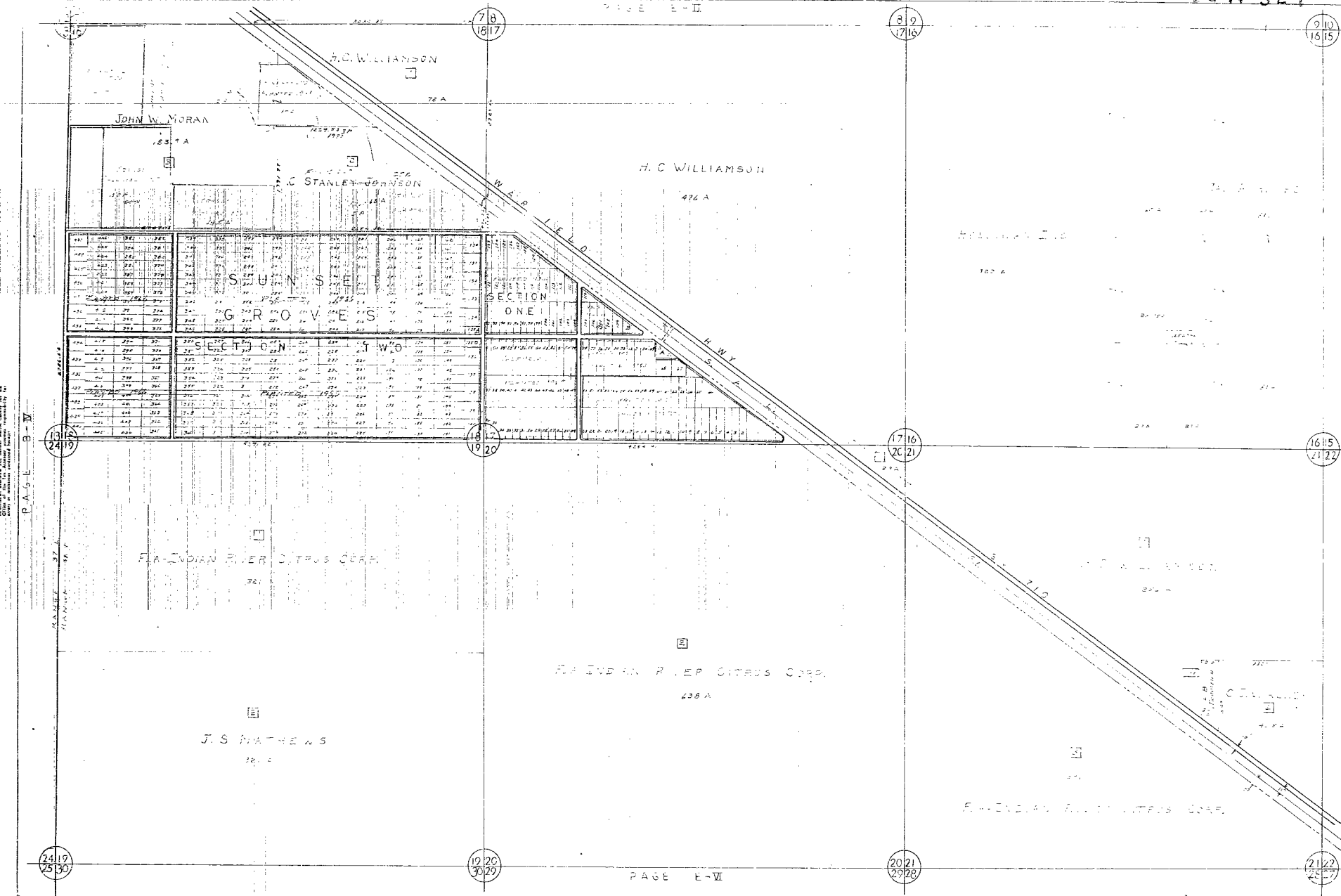
347 p. 387

FILED FOR RECORD
MAY 18 1972
COUNTY CLERK
MARTIN COUNTY, FLORIDA

347 p. 388

REGISTRATION DEPT. NO. 1114
MAY 18 1972
347 p. 389

SUNSET GROVES

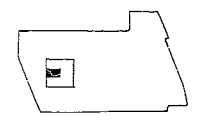


SUNSET GROVES

SECTION	OWNER	ACRES	REMARKS
1	H.C. WILLIAMSON	476 A	
2	JOHN W. MORAN	183 A	
3	C. STANLEY-JOHNSON	144 A	
4	H.C. WILLIAMSON	476 A	
5	H.C. WILLIAMSON	476 A	
6	H.C. WILLIAMSON	476 A	
7	H.C. WILLIAMSON	476 A	
8	H.C. WILLIAMSON	476 A	
9	H.C. WILLIAMSON	476 A	
10	H.C. WILLIAMSON	476 A	
11	H.C. WILLIAMSON	476 A	
12	H.C. WILLIAMSON	476 A	
13	H.C. WILLIAMSON	476 A	
14	H.C. WILLIAMSON	476 A	
15	H.C. WILLIAMSON	476 A	
16	H.C. WILLIAMSON	476 A	
17	H.C. WILLIAMSON	476 A	
18	H.C. WILLIAMSON	476 A	
19	H.C. WILLIAMSON	476 A	
20	H.C. WILLIAMSON	476 A	
21	H.C. WILLIAMSON	476 A	
22	H.C. WILLIAMSON	476 A	
23	H.C. WILLIAMSON	476 A	
24	H.C. WILLIAMSON	476 A	
25	H.C. WILLIAMSON	476 A	
26	H.C. WILLIAMSON	476 A	
27	H.C. WILLIAMSON	476 A	
28	H.C. WILLIAMSON	476 A	
29	H.C. WILLIAMSON	476 A	
30	H.C. WILLIAMSON	476 A	
31	H.C. WILLIAMSON	476 A	
32	H.C. WILLIAMSON	476 A	
33	H.C. WILLIAMSON	476 A	
34	H.C. WILLIAMSON	476 A	
35	H.C. WILLIAMSON	476 A	
36	H.C. WILLIAMSON	476 A	
37	H.C. WILLIAMSON	476 A	
38	H.C. WILLIAMSON	476 A	
39	H.C. WILLIAMSON	476 A	
40	H.C. WILLIAMSON	476 A	
41	H.C. WILLIAMSON	476 A	
42	H.C. WILLIAMSON	476 A	
43	H.C. WILLIAMSON	476 A	
44	H.C. WILLIAMSON	476 A	
45	H.C. WILLIAMSON	476 A	
46	H.C. WILLIAMSON	476 A	
47	H.C. WILLIAMSON	476 A	
48	H.C. WILLIAMSON	476 A	
49	H.C. WILLIAMSON	476 A	
50	H.C. WILLIAMSON	476 A	
51	H.C. WILLIAMSON	476 A	
52	H.C. WILLIAMSON	476 A	
53	H.C. WILLIAMSON	476 A	
54	H.C. WILLIAMSON	476 A	
55	H.C. WILLIAMSON	476 A	
56	H.C. WILLIAMSON	476 A	
57	H.C. WILLIAMSON	476 A	
58	H.C. WILLIAMSON	476 A	
59	H.C. WILLIAMSON	476 A	
60	H.C. WILLIAMSON	476 A	
61	H.C. WILLIAMSON	476 A	
62	H.C. WILLIAMSON	476 A	
63	H.C. WILLIAMSON	476 A	
64	H.C. WILLIAMSON	476 A	
65	H.C. WILLIAMSON	476 A	
66	H.C. WILLIAMSON	476 A	
67	H.C. WILLIAMSON	476 A	
68	H.C. WILLIAMSON	476 A	
69	H.C. WILLIAMSON	476 A	
70	H.C. WILLIAMSON	476 A	
71	H.C. WILLIAMSON	476 A	
72	H.C. WILLIAMSON	476 A	
73	H.C. WILLIAMSON	476 A	
74	H.C. WILLIAMSON	476 A	
75	H.C. WILLIAMSON	476 A	
76	H.C. WILLIAMSON	476 A	
77	H.C. WILLIAMSON	476 A	
78	H.C. WILLIAMSON	476 A	
79	H.C. WILLIAMSON	476 A	
80	H.C. WILLIAMSON	476 A	
81	H.C. WILLIAMSON	476 A	
82	H.C. WILLIAMSON	476 A	
83	H.C. WILLIAMSON	476 A	
84	H.C. WILLIAMSON	476 A	
85	H.C. WILLIAMSON	476 A	
86	H.C. WILLIAMSON	476 A	
87	H.C. WILLIAMSON	476 A	
88	H.C. WILLIAMSON	476 A	
89	H.C. WILLIAMSON	476 A	
90	H.C. WILLIAMSON	476 A	
91	H.C. WILLIAMSON	476 A	
92	H.C. WILLIAMSON	476 A	
93	H.C. WILLIAMSON	476 A	
94	H.C. WILLIAMSON	476 A	
95	H.C. WILLIAMSON	476 A	
96	H.C. WILLIAMSON	476 A	
97	H.C. WILLIAMSON	476 A	
98	H.C. WILLIAMSON	476 A	
99	H.C. WILLIAMSON	476 A	
100	H.C. WILLIAMSON	476 A	

CONDITION OF DOCUMENT
UNSUITABLE FOR MICROFILMING

18.1



SCALE 1"=600'

ASSESSMENT MAP
MARTIN COUNTY,
FLORIDA



16, 17, 18,
SECTION 19, 20, 21
TOWNSHIP 39 S
RANGE 38 E
DRAWN BY [unclear] DATE [unclear]

PAGE E - III

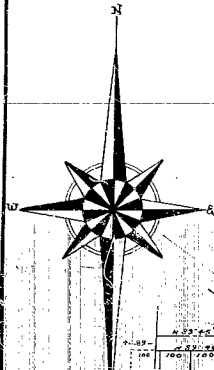
P.A.S.L. B-IV

SECTION ONE OF

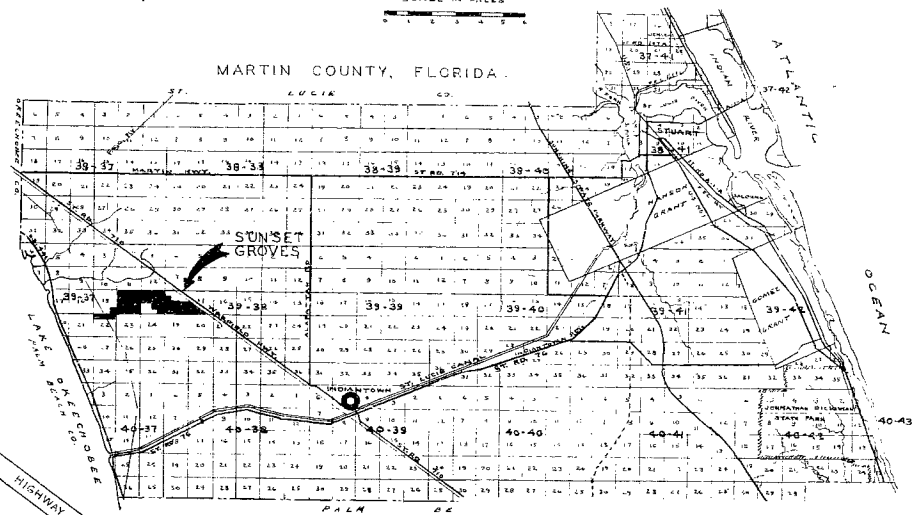
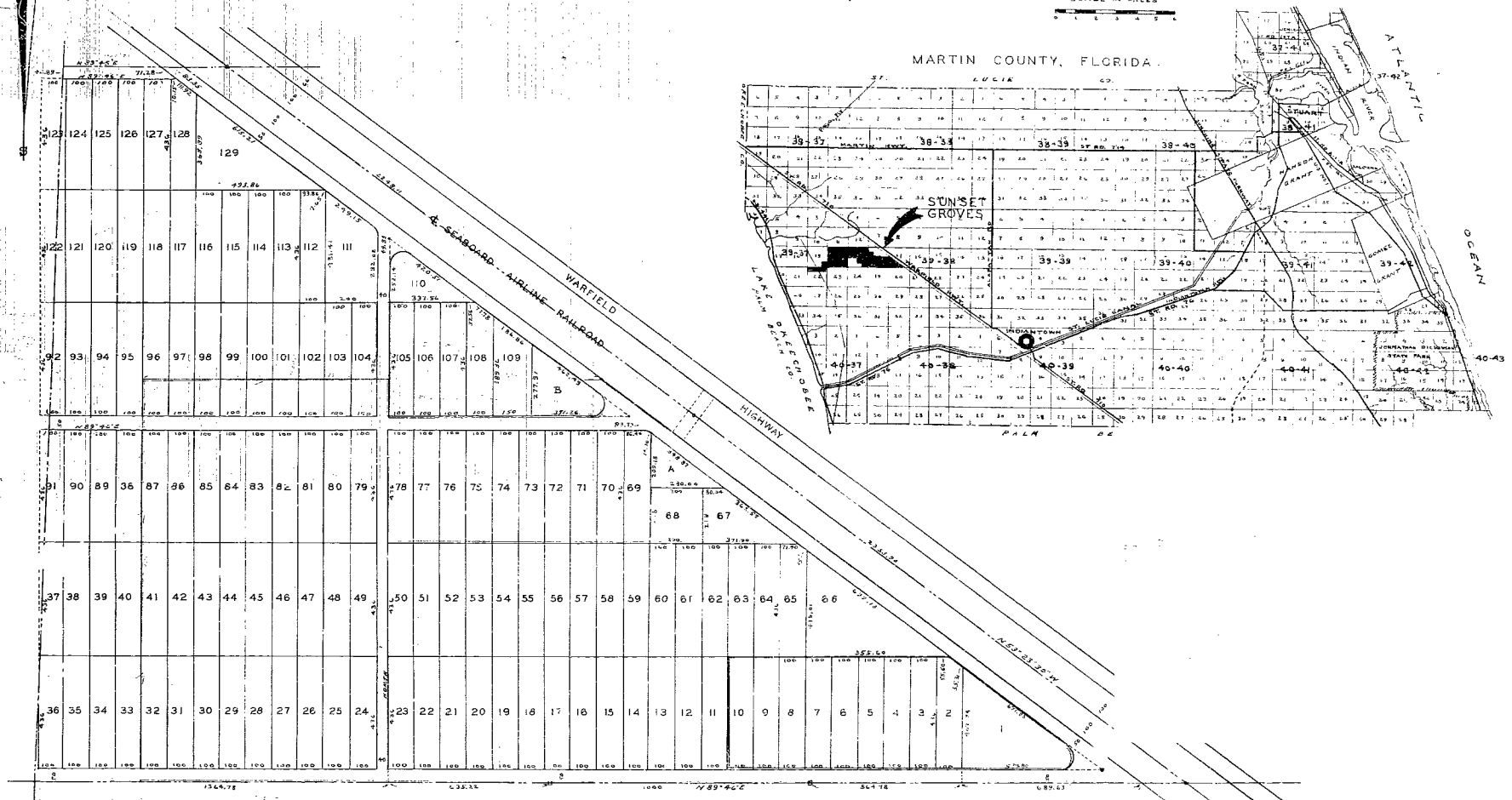
SUNSET GROVES

A DIVISION OF LAND IN THAT PART OF THE SOUTH HALF OF SECTION 17
TWP 39 SOUTH RGE 38 EAST LYING SOUTH AND EAST OF THE SEABOARD
AIRLINE RAILROAD.

MARTIN COUNTY, FLORIDA.



SCALE IN MILES
0 1 2



CONDITION OF DOCUMENT
UNSATISFACTORY FOR MICROFILMING

22:1